

Manifold Valves (PA080)

Applications

- For all instrument isolation duties, giving you bubble tight shut-off time after time.
- For gas, vapor or liquid applications with metal or soft seats
- Suitable for gauge isolation, calibration and venting



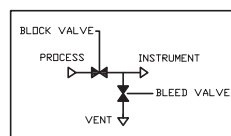
Ordering Information for PA080 Series

Model		Description	
PA080		Manifold Valves	
Code	Valve type		
1	Two-way Manifold Valves		
2	Three-way Manifold Valves		
3	Three-way Manifold Valves (Oval Flange type)		
4	Five-way Manifold Valves		
Code	Material		
C	316/316L SS		
0	Others		
Code	Gauge Connection Style	Code	Gauge Connection Size
2	PT ("R" in ISO Standard)	C	1/4"
3	PF ("G" in ISO Standard)	D	3/8"
4	NPT	F	1/2"
X	Others	O	Others
Code	Process Connection Style	Code	Process Connection Size
2	PT ("R" in ISO Standard)	C	1/4"
3	PF ("G" in ISO Standard)	D	3/8"
4	NPT	F	1/2"
X	Others	G	3/4"
		O	Others
Code	Option		
P1	Packing Material : PTFE		
P2	Packing Material : Grafoil		

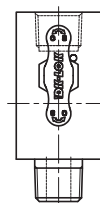
Sample Model Selection : PA080C2F2F

* The standard specification and price are subject to change without prior notice

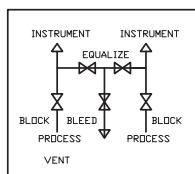
2-WAY VALVE



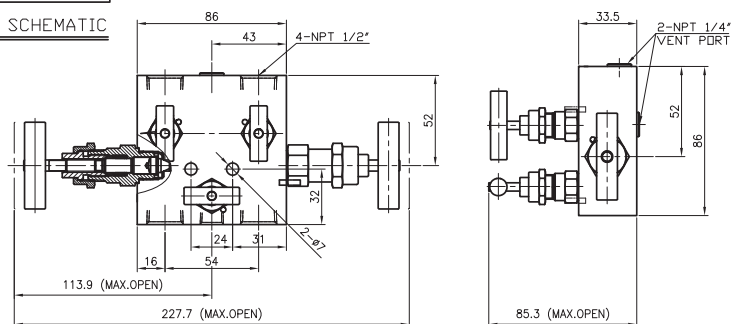
TYPICAL SCHEMATIC



5-WAY VALVE



TYPICAL SCHEMATIC



192