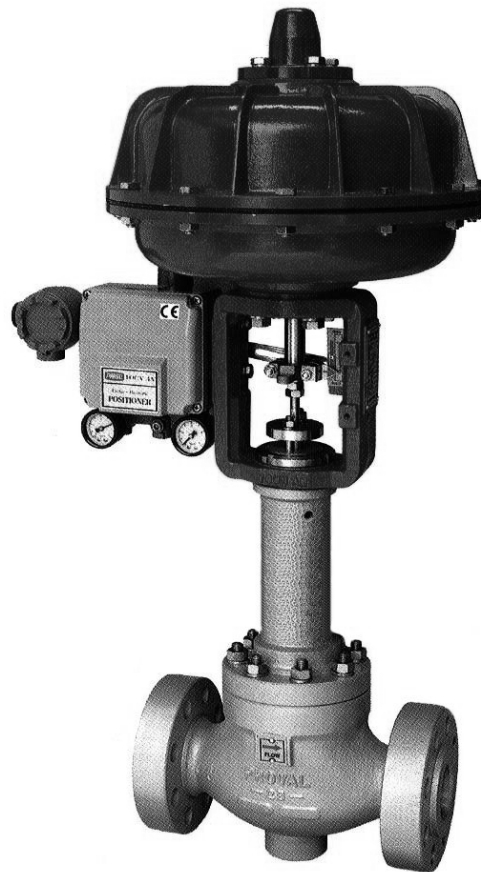




CONTROL VALVE STANDARD SPECIFICATION

HIGH PRESSURE, TEMPERATURE SERVICE

2-WAY GLOBE VALVE



YAD-12251, 12261 Series



<http://www.proval.co.kr>

PROVAL PROVAL Co., Ltd.

[B-3]

PROVAL

LOW NOISE, ANTI-CAVITATION TRIM TYPE

GENERAL

This service was designed for reliable and stable Process fluid control under extra severe flow condition (high temperature, and high difference pressure). A wide variety of trim is available for the "HIGH-SERVICE" control valves.

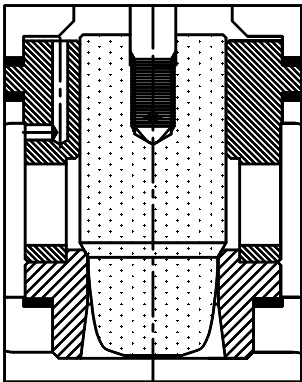
They are designed to match Virtually any service operational requirement. All "HIGH SERVICE" trims feature a quick change to Reduce downtime for inspection, maintenance or change out, and most are cage guided, further ensuring smooth, accurate operation. Standard combined actuators multi-spring diaphragm actuators.



FEATURES

* S1-type Unbalanced Single STD. trim

* Description
 The "S1-type" is cage guide type single seated control valves with contoured plug. Designed for high temperature and pressure, stand against side vibration, and applied to anti-erosion material for trim.

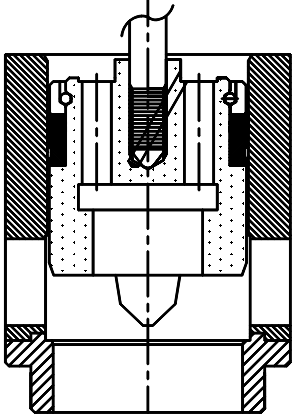


* Application

- General use
- For high TEMP. and diff pressure
- Class IV std. (Class V option)
- EQ%, Linear
- Rangeability = 50 : 1

* D1-type Balanced Cage STD. trim

* Description
 A general purpose cage guide trim is virtually identical in all respects to the balanced single or double seat pore throttling trim except that piston ring are used in lieu of the elastic seal on the trim's plug.



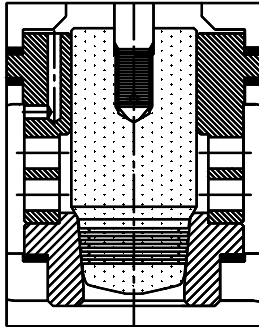
* Application

- General use
- For Low & high TEMP. and diff. pressure
- Single disc Class IV std. (Class V, VI option)
- Double disc Class III std. (Class IV option)
- EQ%, Linear
- Rangeability = 50 :1

* S2-type **Unbalanced Single Cascade trim**

* Description

A cage guided plug throttling trim designed primarily for high pressure drop water applications where cavitations, vibration and excessive wear occur with conventional trims.



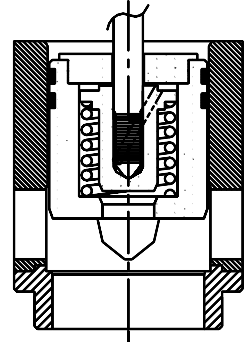
* Application

- High press heater-cooling water control.
- Anti-cavitations, Low noise valve
- Rangeability = 50:1

* D2-type **Balanced Cage Pilot trim**

* Description

Pilot trim is a high performance Specialty trim that is a cage guided, uniquely balanced port throttling high temperature, high pressure differential applications that would require oversized, expensive actuator if more standard trims were utilized.



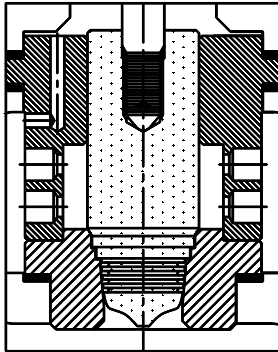
* Application

- High press heater-cooling water control.
- Anti-cavitations, Low noise valve
- Rangeability = 50:1

* S3-type **Unbalanced Single Super Cascade trim**

* Description

Cage guiding is standard. Includes a seating angle of 30° on the plug and 32° in the cage seat. This material is highly resistant to erosion and has proven most suitable for the service.



* Application

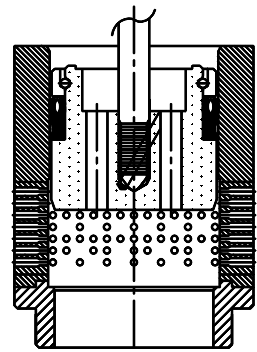
- High press heater-cooling water control.
- Anti-cavitations, Low noise valve
- Rangeability = 50:1 ~ 75:1

* D3-type **Balanced Cage Multi-holes trim**

* Description

The trim can be applied in liquid service where low level cavitation is evident.

The radically step-drilled cage design reduces the effects of cavitations along with the associated noise and erosion problems by forcing the cavitations to occur in the center of the cage, away from all metal surfaces.



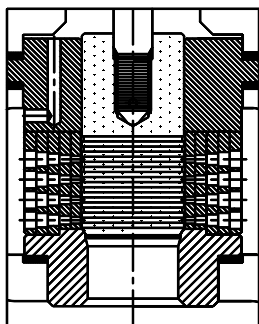
* Application

- High press heater-cooling water control.
- Anti-cavitations, Low noise valve
- Rangeability = 50:1

* S4-type **Unbalanced Single Multi-stage trim**

* Description

Multi-stage trim is a high performance specialty trim that is cage guided and provides excellent control for both compressible and non compressible fluid applications. By directing the flow through a series of staged pressure drops.



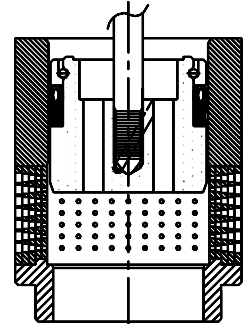
* Application

- For high temperature
- For high diff. pressure.
- Anti-cavitations, Low noise valve
- Anti-erosion valve
- Rangeability = 50:1 ~ 100:1

* D4-type **Balanced Cage Multi Hole-stage trim**

* Description

The "Multi-holes" permits to reduce the noise for high press. Steam & gas service, because of many provide holes in outer cage. The erosion in the trim is eliminated by mean that these valves are used for Anti-cavitations, noise, erosion service.



* Application

- For high diff. press. Steam
- Gas act.
- Anti-cavitations, Low noise valve
- Anti-erosion valve
- Rangeability = 50:1 ~ 100:1

STANDARD SPECIFICATION

Model No.		YAD-12251(RA), 22251(DA), YAD-12261(RA), 22261(DA)								
Valve Type		Diaphragm or Cylinder actuator operated globe control valve.								
BODY	Trim type	S1	S2	S3	S4	D1	D2	D3	D4	
	Valve Size	(mm)	15 ~ 80	15 ~ 65	15 ~ 65	15 ~ 80	40 ~ 500	40 ~ 500	40 ~ 500	40 ~ 500
		(inch)	1/2 ~ 3	1/2 ~ 2 1/2	1/2 ~ 2 1/2	1/2 ~ 3	1 1/2 ~ 20	1 1/2 ~ 20	1 1/2 ~ 20	1 1/2 ~ 20
	Pressure Rating		ANSI 600# ~ 4500# / JIS 30K ~ 63K / JPI 600# ~ 4500#							
	End Connections		Flanged end: FF, RF, RTJ, M/F(female), T/G(female) ※ Welding end: SW, BW.							
	Body Materials		A216-WCB, A351-CF8, CF8M, CF3M							
	Operating Temperature		Standard Type: -20°C ~ 210°C / Extension: -100°C ~ -20°C / Fin 220°C over							
	Gland Packing		V-PTFE, PTFE yarn, Graphite yarn, Graphite molding, Special.							
	Guide		Cage Guide							
	Gasket		SUS316 + Graphite spiral wound, Other alloy steels.							
	Painting Color		Standard is silver. In the case of stainless steel, flange is not painted.							
	Trim Materials		SUS304 (STL.), SUS316 (STL.), SUS316L (STL.), SUS440B(Hard face)							
	Flow Direction		FTO Standard				FTC Standard		FTC: Liquid FTO: Steam or Gas	
Treatment of Trim		See "MATERIAL DATA" page 4, 5								
PERFORMANCE	Valve Action		Direct action, Reverse action							
	Allowable Differential Pressure		See "ALLOWABLE PRESSURE DROP" page 8							
	Rated Cv Value		See "FLOW CHARACTERISTICS " page 6							
	Flow Characteristics		Equal %, Linear, Modify-EQ%							
	Max. Rangeability		50:1	50:1	50:1 (※ 75:1)	50:1 (※ 100:1)	50:1	50:1	50:1	50:1 (※ 100:1)
	Allowable seat Leakage ratio	Standard	0.01% of rated Cv (ANSI B16. 104 Class IV)				Class III	Class IV	Class III	
		Special	※ Tight shut off - 0.002%				Class IV	Class V	Class IV	
Action accuracy	Hysteresis	(With positioner) max. 1.5% F.S.								
	Linearity	(With positioner) max. ±1.5% F.S.								

ACTUATOR	Trim type	S1	S2	S3	S4	D1	D2	D3	D4	
	Valve Size	(mm)	15 ~ 80	15 ~ 65	15 ~ 65	15 ~ 80	40 ~ 500	40 ~ 500	40 ~ 500	40 ~ 500
		(inch)	1/2 ~ 3	1/2 ~ 2 1/2	1/2 ~ 2 1/2	1/2 ~ 3	1 1/2 ~ 20	1 1/2 ~ 20	1 1/2 ~ 20	1 1/2 ~ 20
	Model	A-270M ~ A-520M, or Cylinder Type								
	Actuator Type	Multi-spring diaphragm type, or Cylinder Type								
	Actuator Size	DIA, ACT : Ø270 ~ Ø520								
	Max. Stroke (mm)	DIA, ACT : 20mm ~ 90mm								
	Supply Air Pressure kPa (kgf/cm²G)	DIA, ACT : 140 (1.4), 240 (2.4), 280 (2.8), 320 (3.2)					CYL. ACT : 300~700 (3.0 ~ 7.0)			
	Spring Range kPa (kgf/cm²G)	DIA, ACT : 20~98 (0.2~1.0), 40~200 (0.4~2.0) 60~220 (0.6~2.2), 80~240 (0.8~2.4)					CYL. ACT : 200~300 (2.0 ~ 3.0), 250~350 (2.5~3.5)			
	Action	Direct action, Reverse action.								
	Materials	Diaphragm: EPDM, York: A216-WCB, FCD450 Case: Al-Alloy, SS41 and STKM CYLINDER								
	Air Connection	Rc 1/4" (※ Rc 3/8" ~ Rc 1")								
	Ambient Temperature	-20°C ~ +70°C (※ -50°C ~ -20°C, +70°C ~ +100°C)								
Painting Color	Standard is Cobalt Blue(Munsell No : 2.5 PB3/10) [Request other color]									

[Notes] ※ : Manufactured and attached as according to customer's order.

MATERIAL DATA

1. Combining the valve body, bonnet and trim material.

Parts Name		Materials		
Body, Bonnet		ASTM A216-WCB	ASTM A351-CF8	ASTM A351-CF8M
Trim	Valve Plug	SUS 304, 316, 316L, 420J2, 440B (STL., Hardening treatment)		SUS 316, 316L (STL., Hardening treatment)
	Cage			
	Seat Ring			
	Valve Stem	SUS 316 (Hcr plated)		
Packing & Lantern ring		SUS 316		
Gland		SUS 304		
Stud Bolt & Nut		SNB7 / S45C(H)	SUS 304	

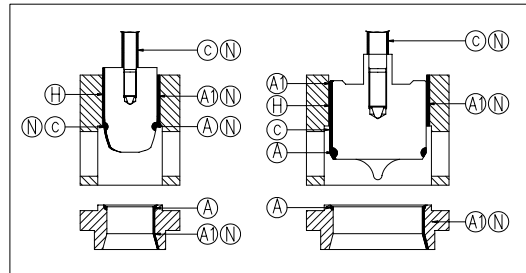
[Notes] (1) This table shows typical combination of materials. The combination may be subject to pressure-temperature and kind of fluid.
 (2) Trim materials may be casting in stead of bar materials in some cases.
 (3) Bonnet may be forged in some cases.

2. Hard facing for trim materials.

Applicable Valve type	Trim No.	Valve plug	Cage	Seat ring	Stem	Packing accessory	Service	
							Temp.(°C)	P1.(Kg)
S1 ~ S4	F1	SUS304 (SCS13) (A)	SUS304 (SCS13) (C)	SUS304 (SCS13) (A)	US316 (C)	SUS304	Over 220°C Up to 320°C	220°C - 25 320°C - 12
	F2	SUS316 (SCS14) (A)	SUS316 (SCS14) (C)	SUS316 (SCS14) (A)		SUS316	Over 220°C Up to 320°C	220°C - 25 320°C - 12
	F3	SUS304 (SCS13) (A) (N)	SUS304 (SCS13) (C)	SUS304 (SCS13) (A)		SUS304	Over 320°C Up to 450°C	320°C - 40 450°C - 25
	F4	SUS316 (SCS14) (A) (A1)	SUS316 (SCS14) (C) (N)	SUS316 (SCS14) (A)		SUS316	Over 450°C Up to 800°C	450°C - 35 800°C - 12
D1 ~ D4	F5	SUS316L (SCS16) (A) (A)	SUS316L (SCS16) (C) (N)	SUS304 (SCS16) (A)	SUS316L (C)	SUS316L	Over 320°C Up to 450°C	320°C - 40 450°C - 25
	F6	SUS440B (SUS420J2) (H)	SUS440B (SUS420J2) (C) (H)	SUS316 (SCS14) (H) (A)	SUS440B (SUS420J2) (C) (H)	SUS304	Over 320°C Up to 450°C	320°C - 80 450°C - 40

* Explanation marks of "2. Hard facing for materials"

- (A) : Stellite—building of valve plug and seat ring.
- (A1) : Stellite face.
- (C) : Valve plug guide and valve stem are completely plated with hard chrome.
- (H) : Heat treatment by hardening and annealing.
- (N) : KCQ Treatment



3. Body material & operating pressure-temperature rating.

3-1 ANSI

[Unit: MPa]

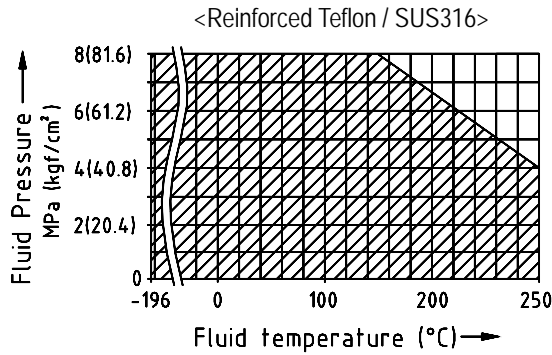
Material	600#			900#			1500#		
	A216-WCB	A351-CF8	A351-CF8M	A216-WCB	A351-CF8	A351-CF8M	A216-WCB	A351-CF8	A351-CF8M
Temp. (°C)									
-29 ~ 38	10.20	9.92	9.92	15.30	14.89	14.89	25.53	24.81	24.81
90	9.30	8.27	8.55	13.96	12.41	12.82	23.26	20.68	21.33
150	9.06	7.27	7.72	13.58	10.92	11.58	22.61	18.19	19.26
200	8.75	6.48	7.10	13.09	9.72	10.61	21.84	16.20	17.71
315	7.54	5.72	6.24	11.30	8.58	9.34	18.85	14.30	15.54
400	6.96	5.48	5.82	10.41	8.24	8.75	17.37	13.71	14.54
510	-	5.17	5.34	-	7.75	7.99	-	12.89	13.30
620	-	2.69	3.79	-	4.03	5.69	-	6.75	9.44
700	-	1.14	1.90	-	1.69	2.83	-	2.83	4.72
760	-	0.65	1.03	-	1.00	1.55	-	1.65	2.62
815	-	0.34	0.59	-	0.48	0.86	-	0.83	1.41

3-2 JIS

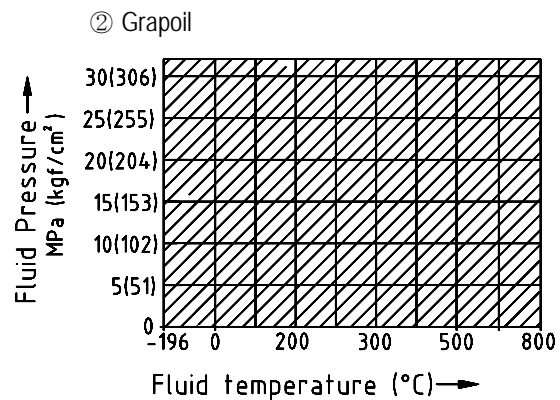
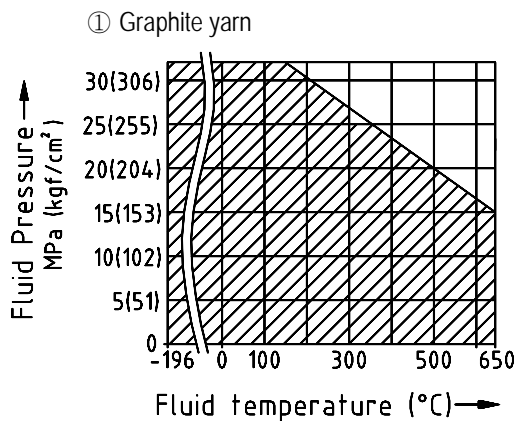
[Unit: MPa]

Material	SCPH2		
	30K	40K	63K
Temp. (°C)			
-29 ~ 38	5.15	6.87	10.82
90	5.04	6.72	10.58
150	4.68	6.24	9.83
200	4.55	6.07	9.56
315	3.92	5.23	8.23
400	3.49	4.65	7.33
510	0.93	1.24	1.95
620	0.17	0.23	0.36
700	-	-	-
760	-	-	-
815	-	-	-

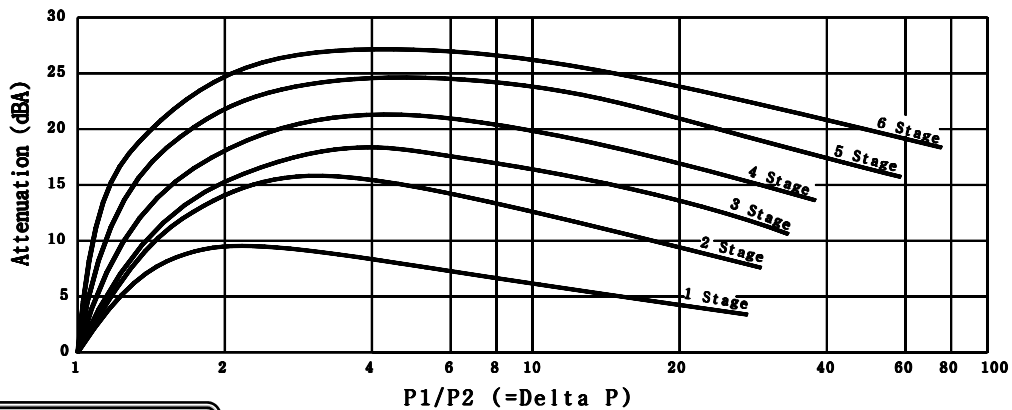
4. Balance seal operating pressure-temperature rating.



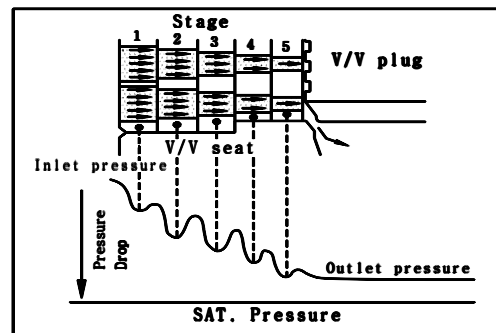
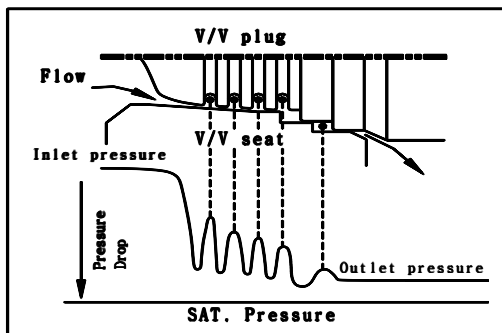
5. Gland packing operating pressure-temperature rating.



NOISE ATTENUATION CURVES



PRESSURE DROP





HIGH PRESSURE, TEMPERATURE SERVICE GLOBE VALVES

FLOW CHARACTERISTICS

1. Rated Cv value

1-1 Unbalanced single trim

[Unit: gal/min]

Port size Trim type	15A (1/2")	20A (3/4")	25A (1")	32A (1 1/4")	40A (1 1/2")	50A (2")	65A (2 1/2")	80A (3")
Cv Value	4.7	8	15	19	24	37	57	80

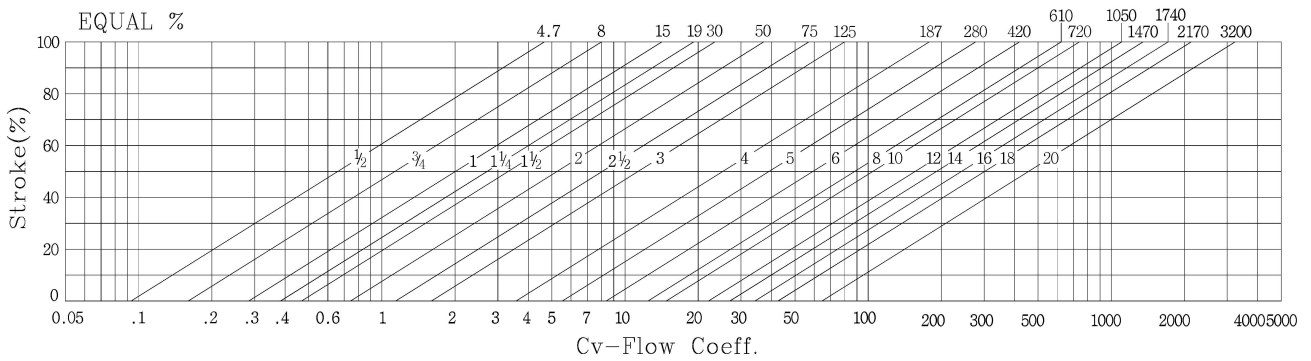
1-2 Balanced cage

[Unit: gal/min]

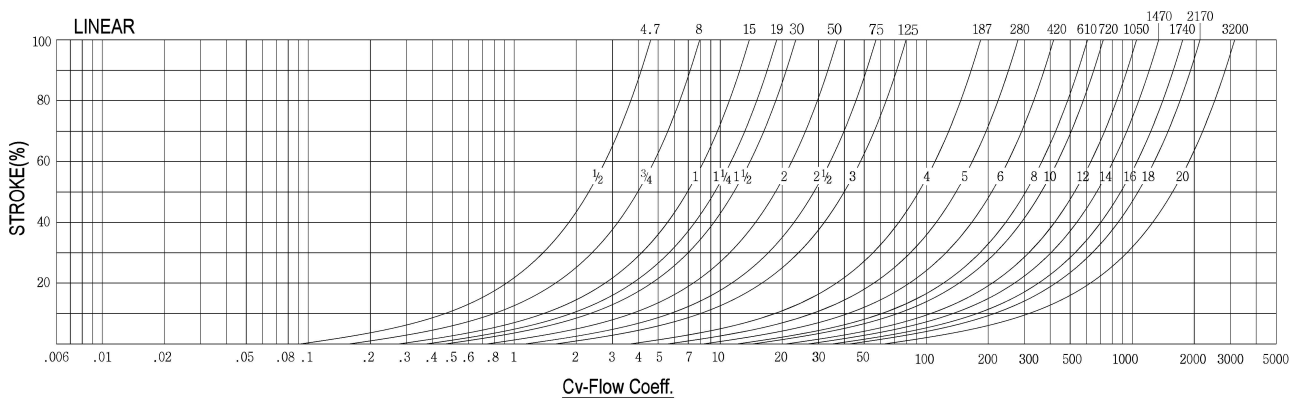
Port size Trim type	40A (1 1/2")	50A (2")	65A (2 1/2")	80A (3")	100A (4")	125A (5")	150A (6")	200A (8")	250A (10")	300A (12")	350A (14")	400A (16")	450A (18")	500A (20")
Cv Value	30	50	75	125	187	280	420	610	720	1050	1470	1740	2170	3200

2. Flow Characteristics

2-1 Equal % (S1, D1, D2)



2-2 Linear (S2, S3, D3, D4)



MAX. ALLOWABLE PRESSURE DROP

1. Diaphragm Actuator: S1 ~ S4 Cage Unbalance type. Reverse Action (RA, Air to Open)

Shaded zone represents standard application.

[Unit: Kg/cm²G]

Actuator Model	Air Supply (Kg/cm ² G)	Spring Range (Kg/cm ² G)	Port Size							
			15A (½")	20A (¾")	25A (1")	32A (1¼")	40A (1½")	50A (2")	65A (2½")	80A (3")
A-270M	2.6	0.4 ~ 2.0	52	31	19					
	3.2	0.8 ~ 2.4	108	61	38	24				
A-360M	2.6	0.4 ~ 2.0			39	24	15			
	3.2	0.8 ~ 2.4			77	47	31	29		
	3.2	1.2 ~ 2.4			116	70	46	29		
A-430M	2.6	0.4 ~ 2.0						24		
	3.2	0.8 ~ 2.4						48	18	12
	3.2	1.2 ~ 2.4						71	25	18

2. Diaphragm Actuator: D1 ~ D4 Cage balanced type. Reverse Action (RA, Air to Open)

Shaded zone represents standard application.

Actuator Model	Air Supply (Kg/cm ² G)	Spring Range (Kg/cm ² G)	Port Size													
			40A (1½")	50A (2")	65A (2½")	80A (3")	100A (4")	125A (5")	150A (6")	200A (8")	250A (10")	300A (12")	450A (14")	400A (16")	450A (18")	500A (20")
A-270M	2.6	0.4 ~ 2.0	25	21	11											
	3.2	0.8 ~ 2.4	63	38	28											
A-360M	2.6	0.4 ~ 2.0		42	22	13	11									
	3.2	0.8 ~ 2.4			56	33	28									
A-430M	2.6	0.4 ~ 2.0					17	14	11	7						
	3.2	0.8 ~ 2.4					42	34	28	18						
A-520M	2.6	0.4 ~ 2.0								10.5	9	7	6	CYLINDER ACTUATOR STANDARD		
	3.2	0.8 ~ 2.4								27	23	18	15			

3. Diaphragm Actuator: S1, S2, S3, S4 Single type. Direct Action (DA, Air to Close)

■ Shaded zone represents standard application.

[Unit: Kg/cm²G]

Actuator Model	Air Supply (Kg/cm ² G)	Spring Range (Kg/cm ² G)	Port Size							
			15A (½")	20A (¾")	25A (1")	32A (1¼")	40A (1½")	50A (2")	65A (2½")	80A (3")
A-270M	2.0	0.2~ 1.0	150	85	52	28				
	3.2	0.4 ~ 2.0		105	69	39				
A-360M	2.0	0.2~ 1.0			105	65	42	26		
	3.2	0.4 ~ 2.0			129	78	51	32		
A-430M	2.0	0.2~ 1.0						64	24	16
	3.2	0.4 ~ 2.0						79	30	20

4. Diaphragm Actuator: D1, D2, D3, D4 Cage balanced type. Direct Action (DA, Air to Close)

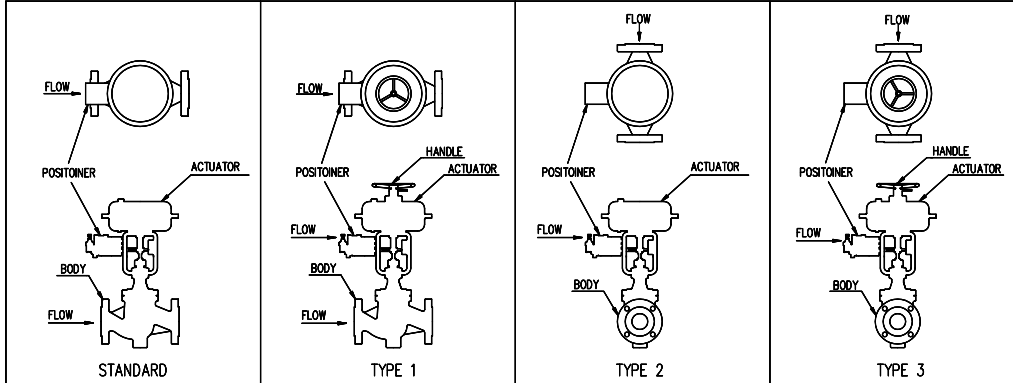
■ Shaded zone represents standard application.

[Unit: Kg/cm²G]

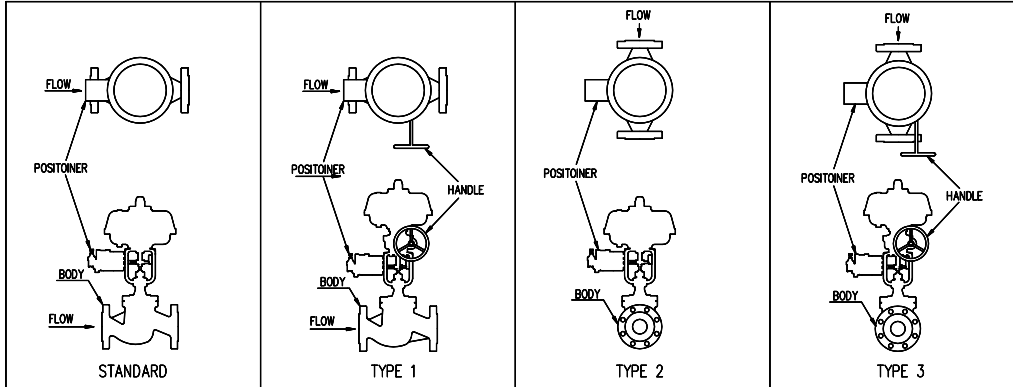
Actuator Model	Air Supply (Kg/cm ² G)	Spring Range (Kg/cm ² G)	Port Size									
			50A (2")	65A (2½")	80A (3")	100A (4")	125A (5")	150A (6")	200A (8")	250A (10")	300A (12")	350A (14")
A-270M	2.0	0.2~ 1.0	52	48	36							
	3.2	0.4 ~ 2.0	78	72	54							
A-360M	2.0	0.2~ 1.0		96	72	56	44	36				
	3.2	0.4 ~ 2.0		144	108	84	66	54				
A-430M	2.0	0.2~ 1.0					67	58	19			
	3.2	0.4 ~ 2.0					101	86	29			
A-520M	2.0	0.2~ 1.0							30	26	24	20
	3.2	0.4 ~ 2.0							60	52	48	40

ACTUATOR MOUNTING FORMS

ACTUATOR : A-220M ~ A-270M, CYLINDER TYPE



ACTUATOR : A-360M ~ A-520M, CYLINDER TYPE



WEIGHT

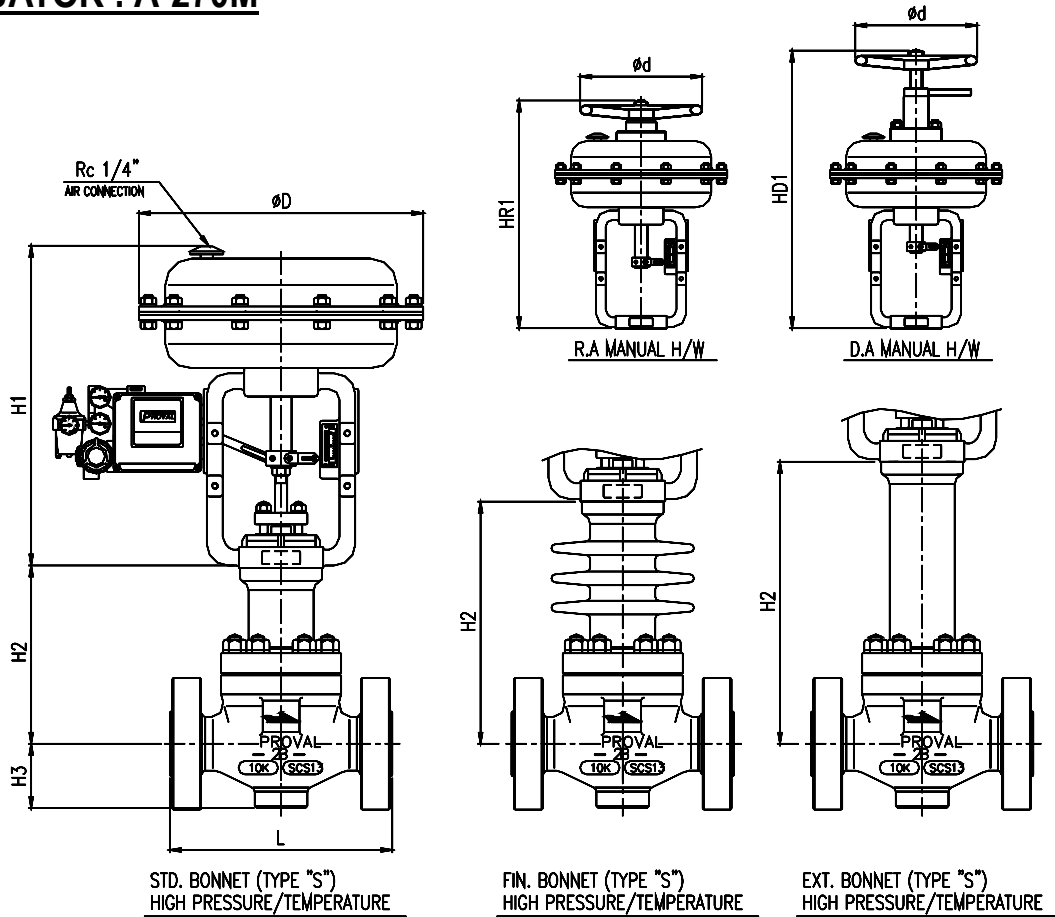
* Only standard types are represented. Weight of accessories, a hand wheel and the like are not included.

[Unit: kg]

Size	15A	20A	25A	32A	40A	50A	65A	80A	100A	125A	150A	200A	250A	300A	350A	400A	450A	500A	
	(½")	(¾")	(1")	(1¼")	(1½")	(2")	(2½")	(3")	(4")	(5")	(6")	(8")	(10")	(12")	(14")	(16")	(18")	(20")	
Actuator Model	30K / ANSI 600	40K, 63K / ANSI 900, 1500	30K / ANSI 600	40K, 63K / ANSI 900, 1500	30K / ANSI 600	40K, 63K / ANSI 900, 1500	30K / ANSI 600	40K, 63K / ANSI 900, 1500	30K / ANSI 600	40K, 63K / ANSI 900, 1500	30K / ANSI 600	40K, 63K / ANSI 900, 1500	30K / ANSI 600	40K, 63K / ANSI 900, 1500	30K / ANSI 600	40K, 63K / ANSI 900, 1500	30K / ANSI 600	40K, 63K / ANSI 900, 1500	30K / ANSI 600
	40K, 63K / ANSI 900, 1500	30K / ANSI 600	40K, 63K / ANSI 900, 1500	30K / ANSI 600	40K, 63K / ANSI 900, 1500	30K / ANSI 600	40K, 63K / ANSI 900, 1500	30K / ANSI 600	40K, 63K / ANSI 900, 1500	30K / ANSI 600	40K, 63K / ANSI 900, 1500	30K / ANSI 600	40K, 63K / ANSI 900, 1500	30K / ANSI 600	40K, 63K / ANSI 900, 1500	30K / ANSI 600	40K, 63K / ANSI 900, 1500	30K / ANSI 600	40K, 63K / ANSI 900, 1500
A-270M	121	124	123	127	124	129	127	132	129	133	130	136							
A-360M					217	222	219	223	220	226	237	244	250	259	289	304			
A-430M						445	451	462	470	475	485	515	530	547	568	579	605		
A-520M												2330	2362	2407	2452	2675	2738	2925	3075
																3375	3600	3750	4050
																	4500	4800	

DIMENSION DRAWING

ACTUATOR : A-270M



DIMENSIONS

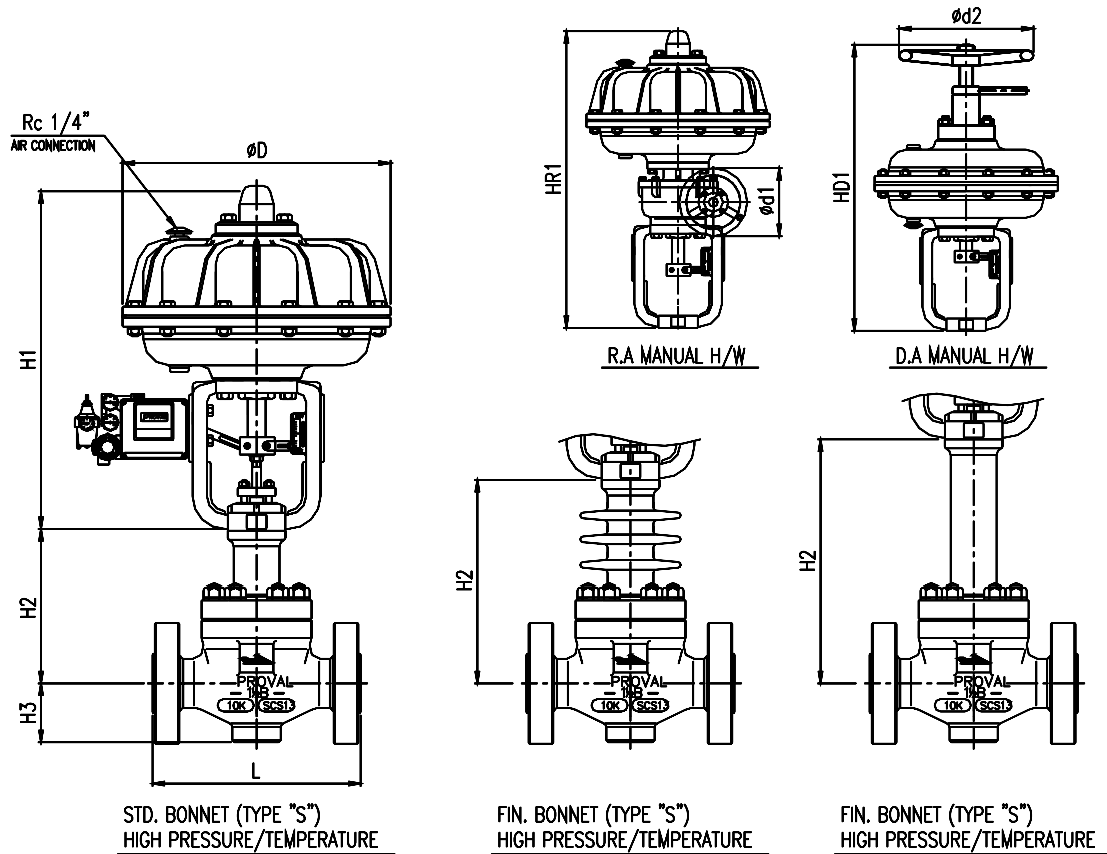
[Unit: mm]

Valve Size		Face to Face : L			H3	H2			Actuator size (ØD)	H1	With Manual H/W		A	Ød
mm	inch	JIS 30K ANSI 600#	JIS 40K ANSI 900#	JIS 63K ANSI 1500#		STD.	FIN.	EXT.			HR1	HD1		
15	½	201	216	216	65	170	370	400	270	310	360 ~ 390	442 ~ 422	322	200
20	¾	201	229	229	65	170	370	400	270	310	360 ~ 390	442 ~ 422	322	200
25	1	201	254	254	68	170	370	400	270	310	360 ~ 390	442 ~ 422	322	200
32	1¼	245	279	279	85	185	385	415	270	310	360 ~ 390	442 ~ 422	322	200
40	1½	245	305	295	85	185	385	415	270	310	360 ~ 390	442 ~ 422	322	200
50	2	286	368	368	90	210	410	440	270	310	360 ~ 390	442 ~ 422	322	200

MODEL	YAD-12251, YAD-22251 (Type "S") YAD-12261, YAD-22261 (Type "S")	SIZE	15A ~ 50A
PROVAL Co., Ltd.			

DIMENSION DRAWING

ACTUATOR : A-360M



DIMENSIONS

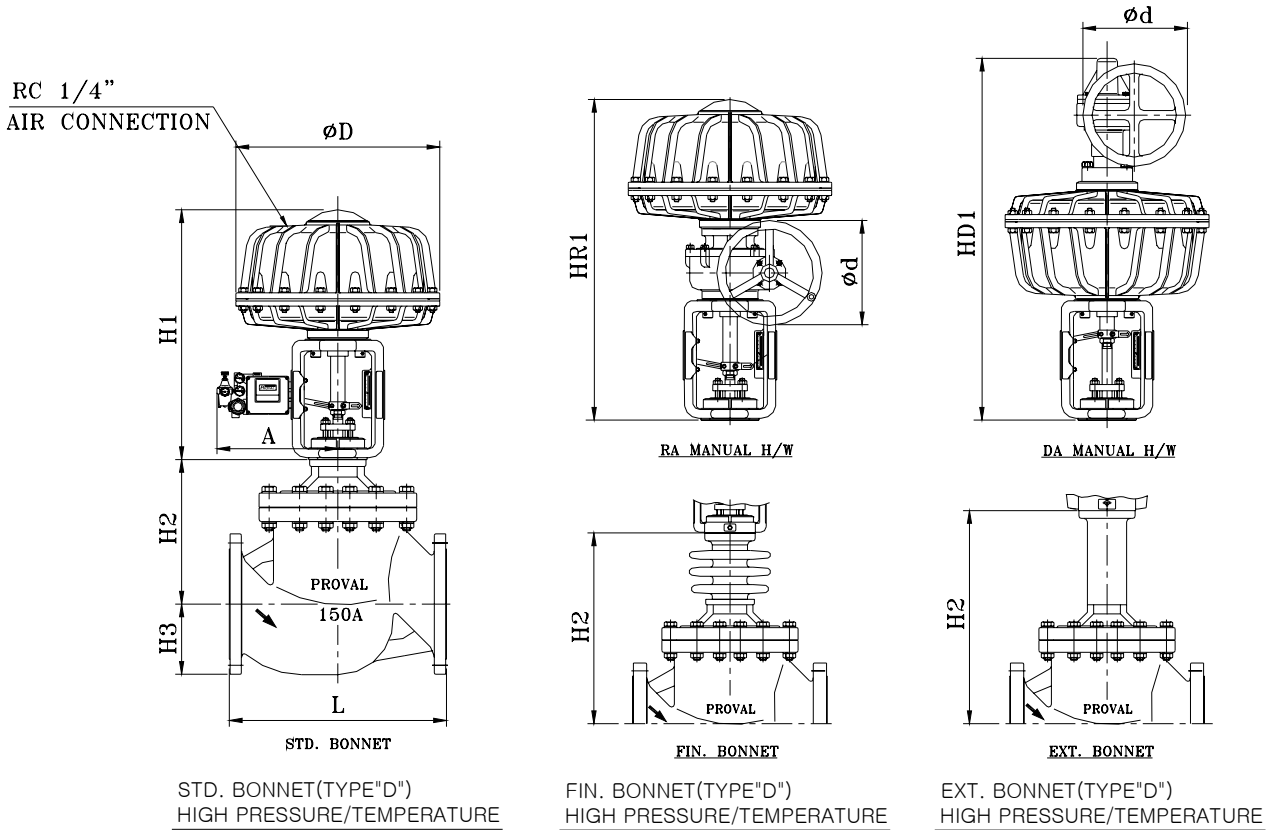
[Unit: mm]

Valve Size		Face to Face : L			H3	H2			Actuator size (ØD)	H1		With Manual H/W		A	Ød1	Ød2
mm	inch	JIS 30K ANSI 600#	JIS 40K ANSI 900#	JIS 63K ANSI 1500#		STD.	FIN.	EXT.		RA	DA	HR1	HD1			
32	1¼	245	279	279	85	185	385	415	360	458	427	590	588 -548	327	200	315
40	1½	245	305	295	85	185	385	415	360	458	427	590	588 -548	327	200	315
50	2	286	368	368	90	210	410	440	360	458	427	590	588 -548	327	200	315
65	2½	315	419	419	70	280	480	510	360	458	427	590	588 -548	327	200	315
80	3	397	432	470	80	320	520	550	360	458	427	590	588 -548	327	200	315

MODEL	YAD-12251, YAD-22251 (Type "S") YAD-12261, YAD-22261 (Type "S")	SIZE	32A ~ 80A
PROVAL Co., Ltd.			

DIMENSION DRAWING

ACTUATOR : A-430M



DIMENSIONS

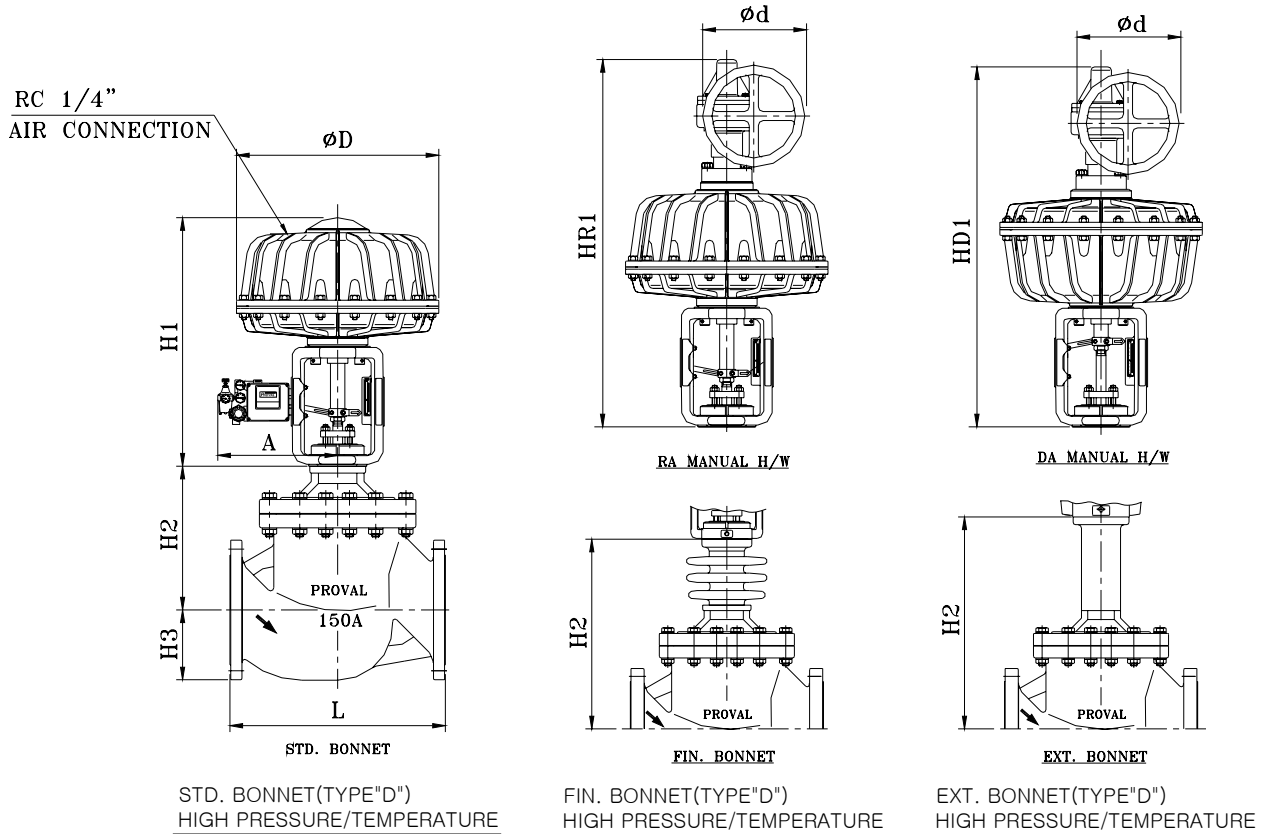
[Unit: mm]

Valve Size		Face to Face : L			H3	H2			Actuator size (ØD)	H1		With Manual H/W		A	Ød
mm	inch	JIS 30K ANSI 600#	JIS 40K ANSI 900#	JIS 63K ANSI 1500#		STD.	FIN.	EXT.		RA	DA	HR1	HD1		
50	2	286	368	368	90	210	410	440	430	554	643	880	870 ~780	345	315
65	2½	315	419	419	70	280	480	510	430	554	643	880	870 ~780	345	315
80	3	397	432	470	80	320	520	550	430	554	643	880	870 ~780	345	315

MODEL	YAD-12251, YAD-22251 (Type "S") YAD-12261, YAD-22261 (Type "S")	SIZE	50A ~ 80A
PROVAL Co., Ltd.			

DIMENSION DRAWING

ACTUATOR : A-430M



DIMENSIONS

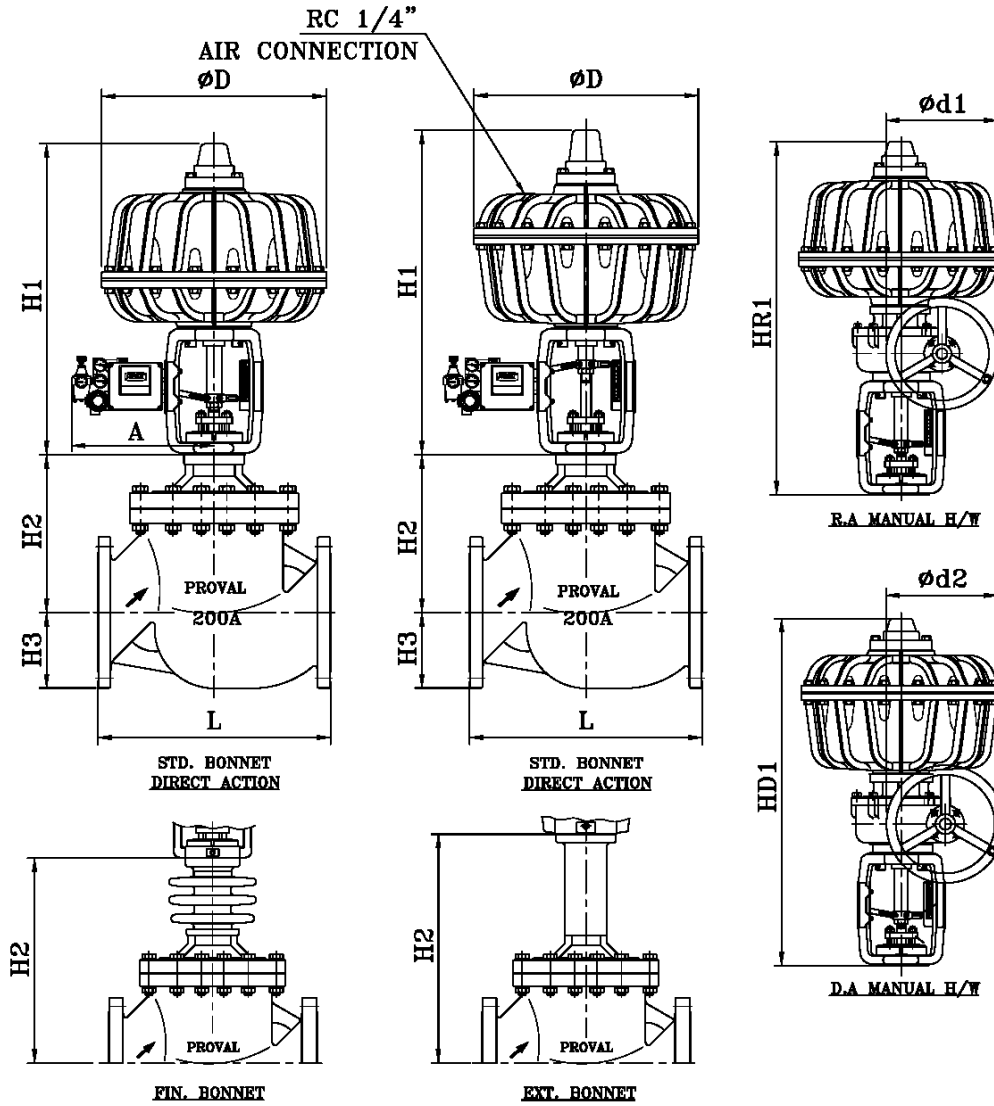
[Unit: mm]

Valve Size		Face to Face : L			H3	H2			Actuator size (ØD)	H1		With Manual H/W		A	Ød
mm	inch	JIS 30K ANSI 600#	JIS 40K ANSI 900#	JIS 63K ANSI 1500#		STD.	FIN.	EXT.		RA	DA	HR1	HD1		
80	3	397	432	470	80	320	520	535	430	554	643	890	870 -780	345	315
100	4	394	457	546	101	340	540	575	430	554	643	890	870 -780	345	315
125	5	457	559	673	110	373	573	605	430	554	643	890	870 -780	345	315
150	6	508	610	705	136	399	599	630	430	554	643	890	870 -780	345	315
200	8	610	737	832	176	445	645	675	430	554	643	890	870 -780	345	315

MODEL	YAD-12251, YAD-22251 (Type "D") YAD-12261, YAD-22261 (Type "D")	SIZE	80A ~ 200A
PROVAL Co., Ltd.			

DIMENSION DRAWING

ACTUATOR : A-520M



DIMENSIONS

[Unit: mm]

Valve Size		Face to Face : L			H3	H2			Actuator size (ØD)	H1		With Manual H/W		A	Ød
mm	inch	JIS 30K ANSI 600#	JIS 40K ANSI 900#	JIS 63K ANSI 1500#		STD.	FIN.	EXT.		RA	DA	HR1	HD1		
200	8	610	737	832	176	443	643	673	520	735	790	990	1060	350	315
250	10	752	752	890	210	506	706	736	520	735	790	990	1060	350	315

MODEL	YAD-12251, YAD-22251 (Type "D") YAD-12261, YAD-22261 (Type "D")	SIZE	200A ~ 250A
PROVAL Co., Ltd.			