

Piston Type Level Switch

Model : SC5/SB3

SC5/SB3

Piston Type Level Switch

Features

- Almost no trouble because of simple structure.
- It's suitable to use to detect low level of silo or tank as it's almost not effected by live load of material.
- Can select the proper model among the various model.
- No calibration is needed.

Applications

■ Chemical Industry :

Plastic, Medicines, Chemicals, Fertilizer.

■ Food Industry :

Milling, Grain food oil, Confection, Sugar, Coffee, Seasoning, etc.

■ Ceramic mining Industry:

Cement glass, Coal, Sand, Iron powder etc.

■ Machine Industry :

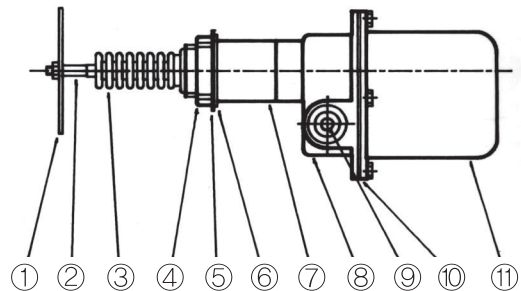
- Meter assembler conveyor, Farming machine (Rice milling machine)
- Constructing machine (Asphalt plant, Venture plant, Crasher)
- Casting machine (Sand treating)

Simple structure and superior endurance.

Can select the right model among the various type.

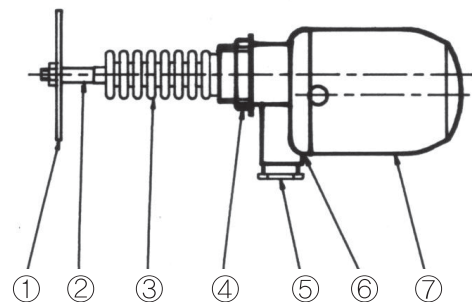
Structure

SC5-X Type



No.	Part	Material	No.	Part	Material
1	Paddle	304SS	7	Cap	304SS
2	Shaft	304SS	8	Housing	ADC
3	Shaft Seal	Neoprene Rubber	9	Cable Gland	Brass
4	Fitting Nut	304SS	10	Packing	NBR
5	Fitting Washer	304SS	11	Cover	P.C
6	Packing	NBR			

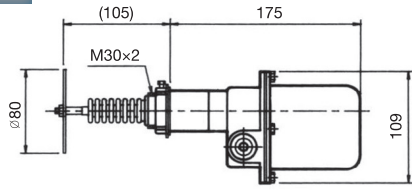
SB3-X Type



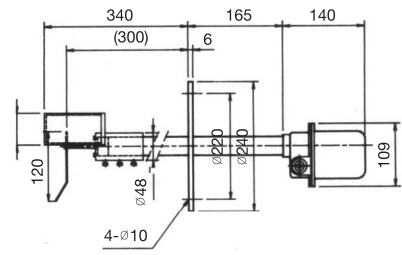
No.	Part	Material	No.	Part	Material
1	Paddle	304SS	5	Cable gland	ABS
2	Shaft	304SS	6	Housing	Poly Phenol
3	Shaft Seal	NBR	7	Cover	P.C
4	Nut	Poly Phenol			

Overall Dimensions

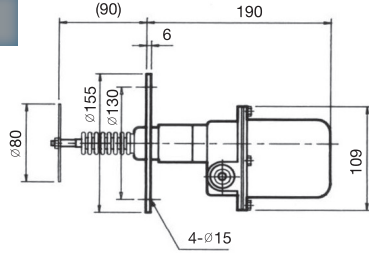
1. SC5-X



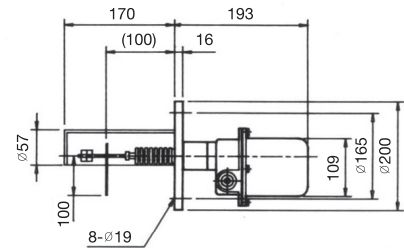
7. SC5-TA



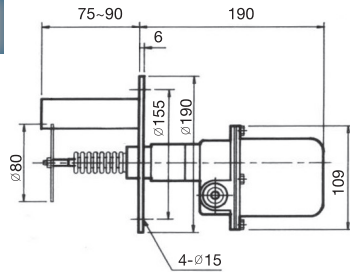
2. SC5-F



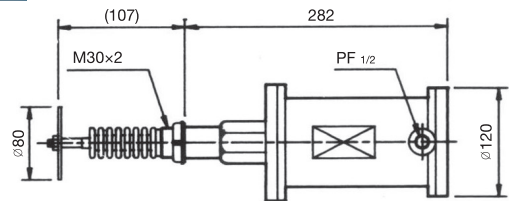
8. SC5-D



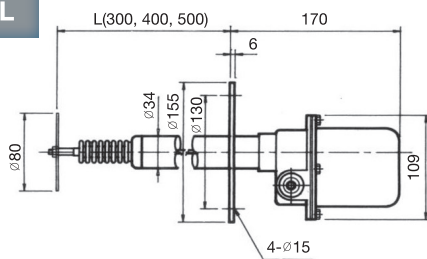
3. SC5-G



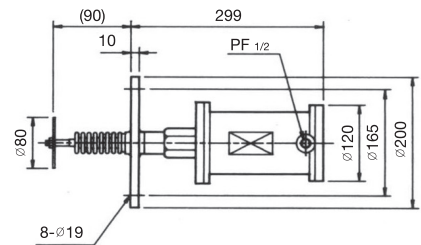
9. SC5-E



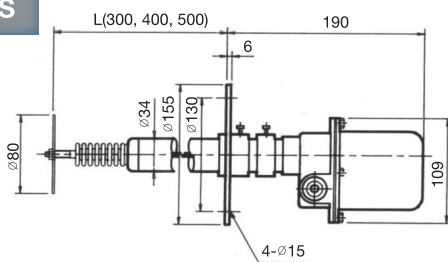
4. SC5-L



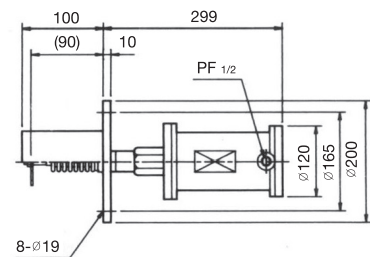
10. SC5-EF



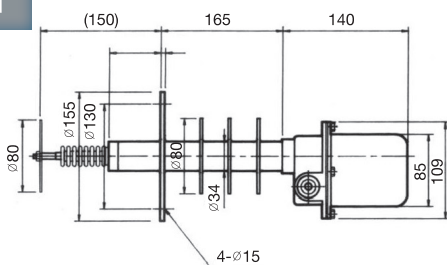
5. SC5-S



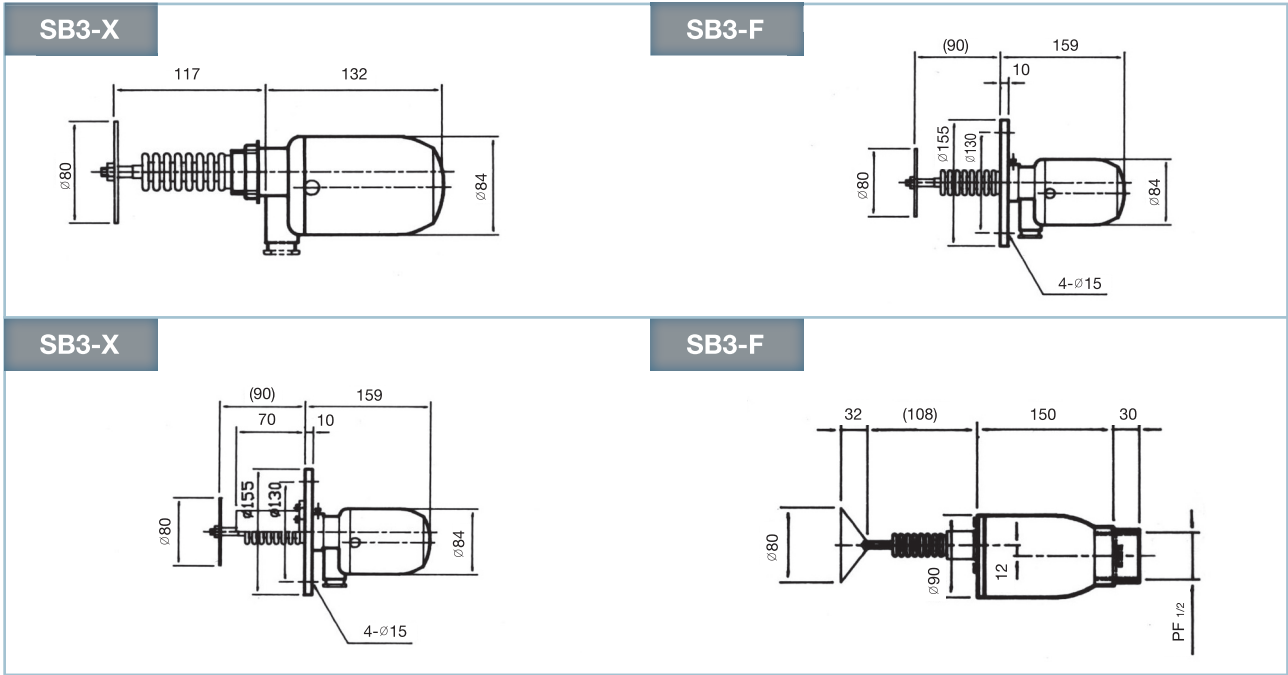
11. SC5-EG



6. SC5-T



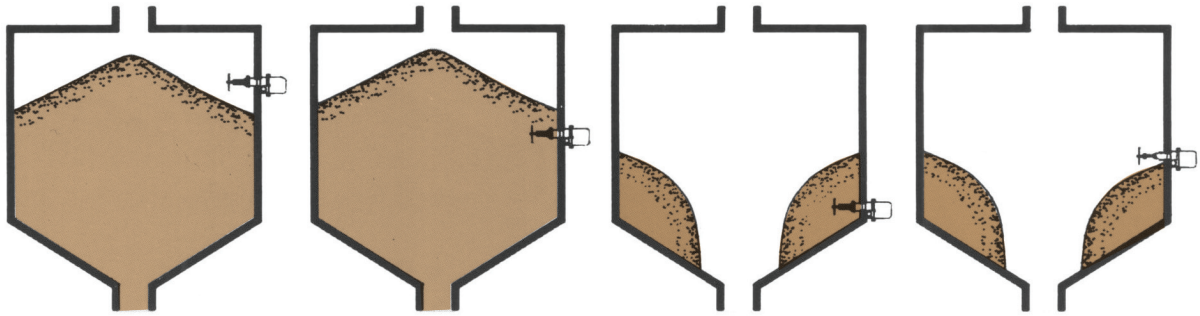
► SB3 type



► Detailed specifications for each model.

No.	Model	Type	Material of Detection parts	Temperature inside the Tank Max. °C	Tank Volume			Detection Level		Mounting		Weather -Proof	Remark
					S	M	L	Hi	Low	Side	Top		
1	SC5-X	Basic	304SS Neoprene	80	●	●		●	●	●			
2	SC5-F	Flange	304SS Neoprene	80	●	●		●	●	●		Flange : 304SS	
3	SC5-G	Guard	304SS Neoprene	80		●			●	●		Flange : 304SS	
4	SC5-L	Long Shaft	304SS Neoprene	80	●	●		●	●	●	●	1. Low detection of large tank, attach the guard	
5	SC5-S	Slide Flange	304SS Neoprene	80	●	●		●	●	●	●	2. In case of vertical mounting, make the paddle to corn shape	
6	SC5-T	Heat Proof	304SS Neoprene	150	●	●		●	●	●	●		
7	SC5-TA	Shock proof	304SS Neoprene	300	●	●		●	●	●		Asphalt plant	
8	SC5-D	Shock proof	304SS Neoprene	80	●	●		●	●	●		Venture plant	
9	SC5-E	Ex proof	304SS Neoprene	40	●			●	●	●		d2G4	
10	SC5-EF	Ex proof	304SS Neoprene	40	●			●	●	●		d2G4	
11	SC5-EG	Ex proof	304SS Neoprene	40	●	●		●	●	●		d2G4	

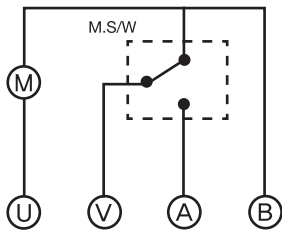
Installation



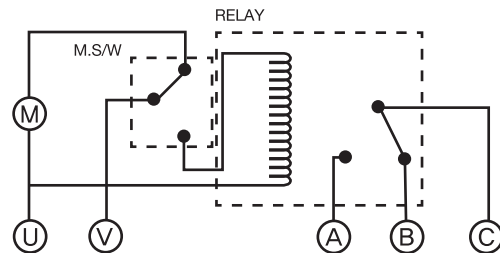
Specifications

Model	SC5-X	SC5-F	SC5-G	SB3-X	SB3-F	SB3-G
Power supply	AC 110V or 220V 50/60HZ					
Contact	Micro switch					
Contact capacity	AC 250V / 10A			AC 250V / 5A		
Temperature limit	80°C			60°C	80°C	
Ingress Protection	Weather-proof			Non weather-proof		
Material	Detection parts	ADC, 304SS, Rubber		304SS Neoprene Gum	ADC, 304SS, Rubber	
	Body	ADC, 304SS, Rubber		Poly Phenol		
Cable gland	JIS F 15C (PF 1/2')					
Mounting	M 30x2	JIS 5K 65A 304SS		M 30x2	JIS 5K 65A 304SS	
Reciprocation St	10mm					
Reciprocation speed	50Hz : 5 reciprocation / min , 60Hz 6 reciprocation / min					

Connection Diagram



Standard connection



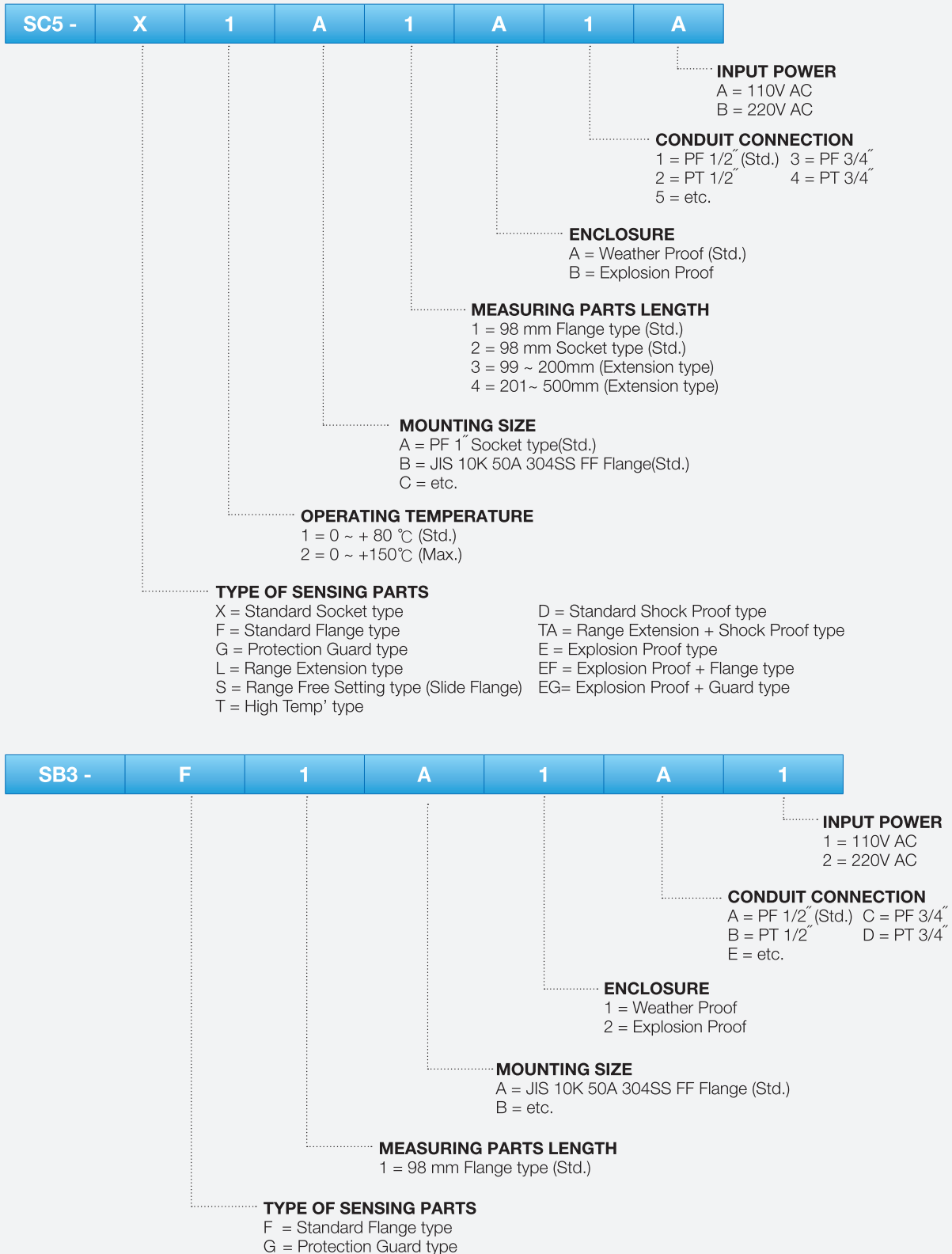
Relay built-in type connection

■ For ordering, notify the following in advance

- 1) Hopper size
- 2) Specific gravity of solid material
- 3) Material aspect
- 4) Presence of moisture & adhesion
- 5) Temperature inside the hopper
- 6) Pressure inside the hopper
- 7) Mounting method
- 8) Solid material name & operating temperature.

Ordering Informations

■ Piston Type Level Switch



■ When placing an order, selected ordering number should be indicated on the purchase order sheet.



12, Sagimakgol-ro 148beon-gil, Jungwon-gu,
 Seongnam-si, Gyeonggi-do, 462-807, Korea
 ☎ +82-31-627-9000 📠 +82-31-624-5345
<http://www.seojin.biz>

Printed by Daoom. 2010. 04 99-CG-010. Rev: 2

■ Specifications subject to change without notice